



Escenografía

Ballet

Teatro

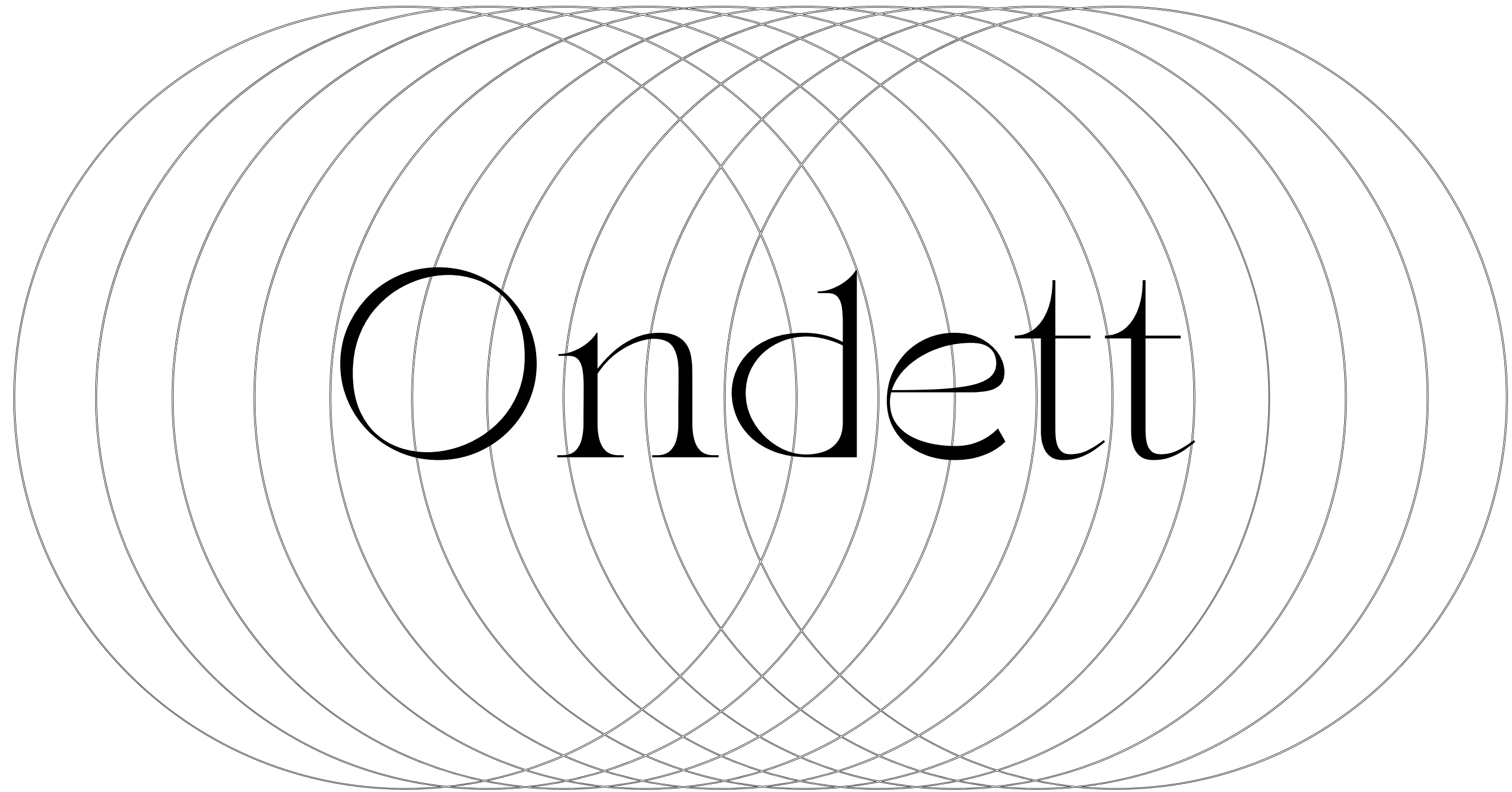
Metropolitano

Laura Zambrano • Escenario y Narrativa

Ballet en Familia

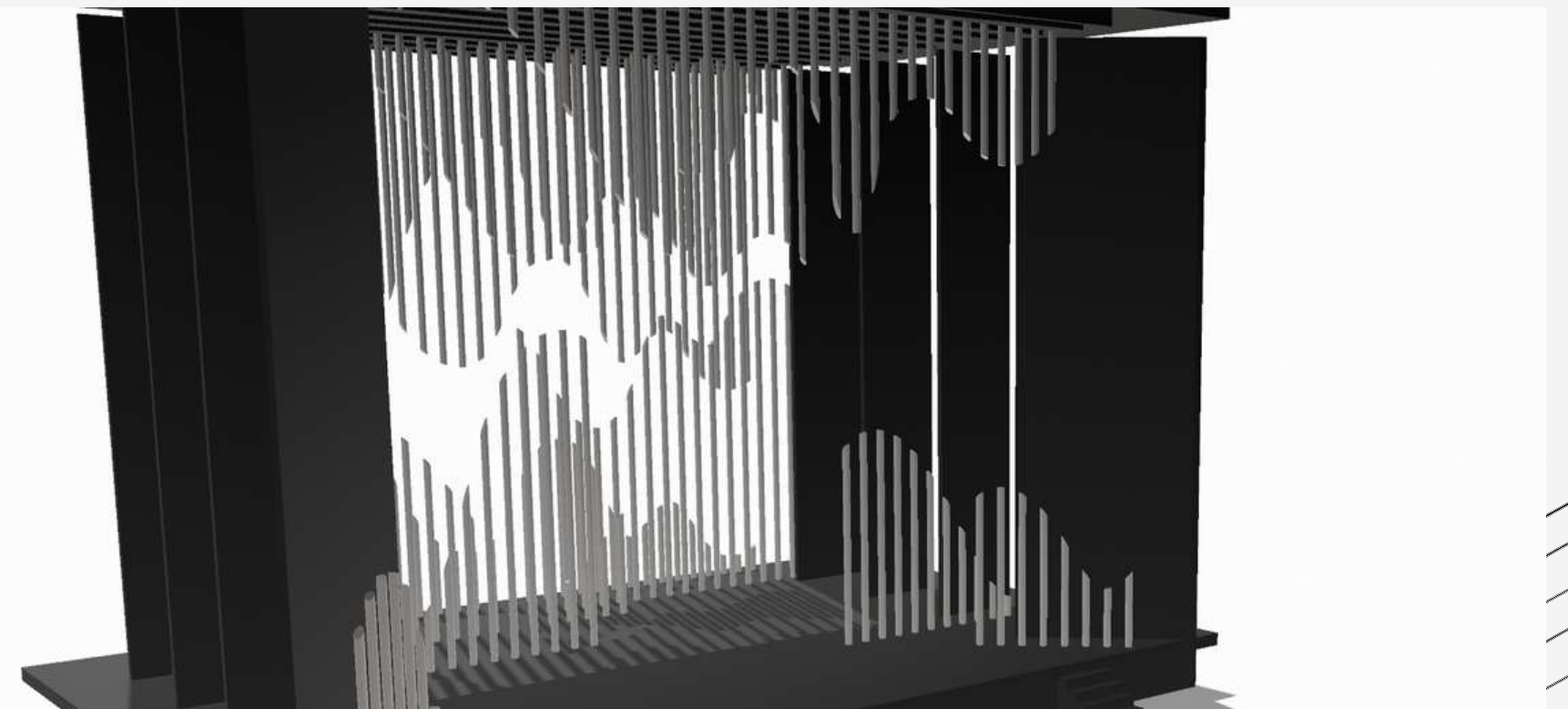
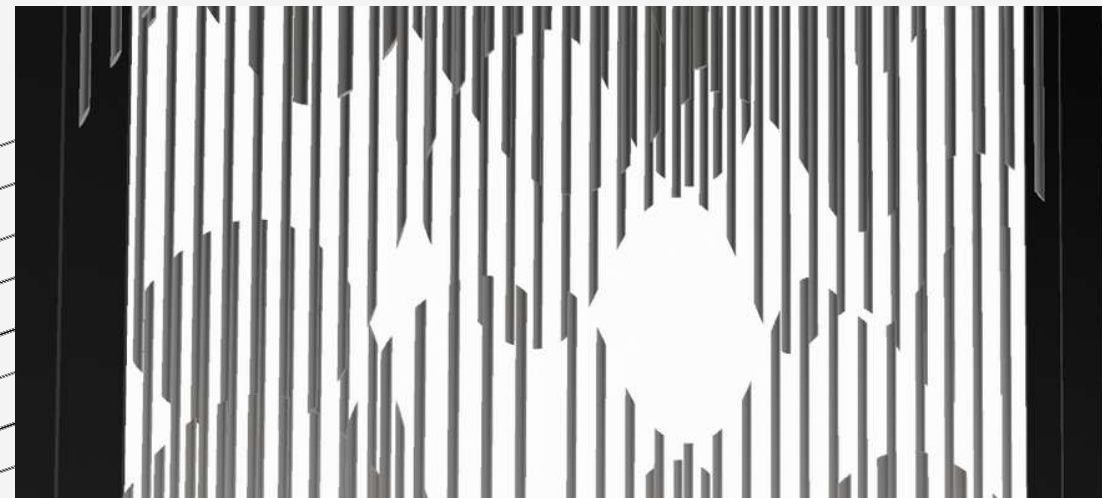
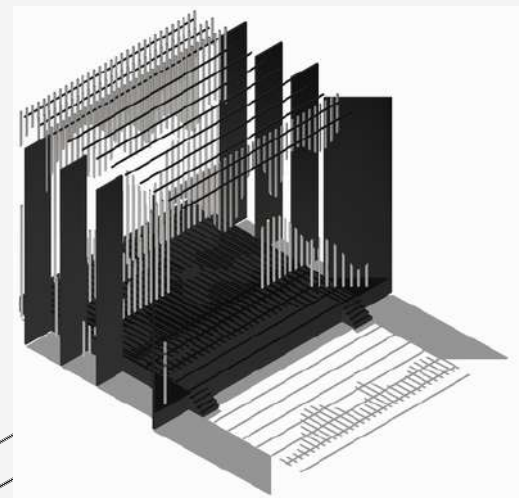
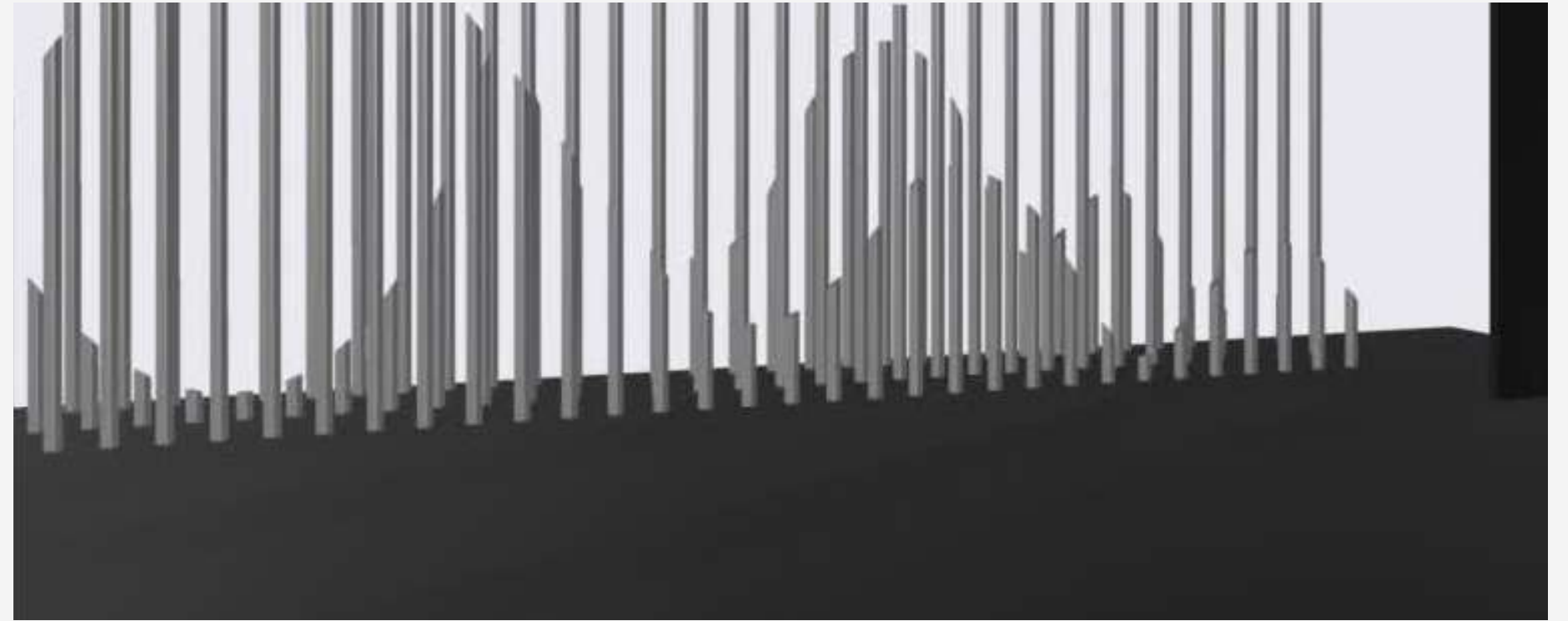
Movimiento
Compilación
Clásico



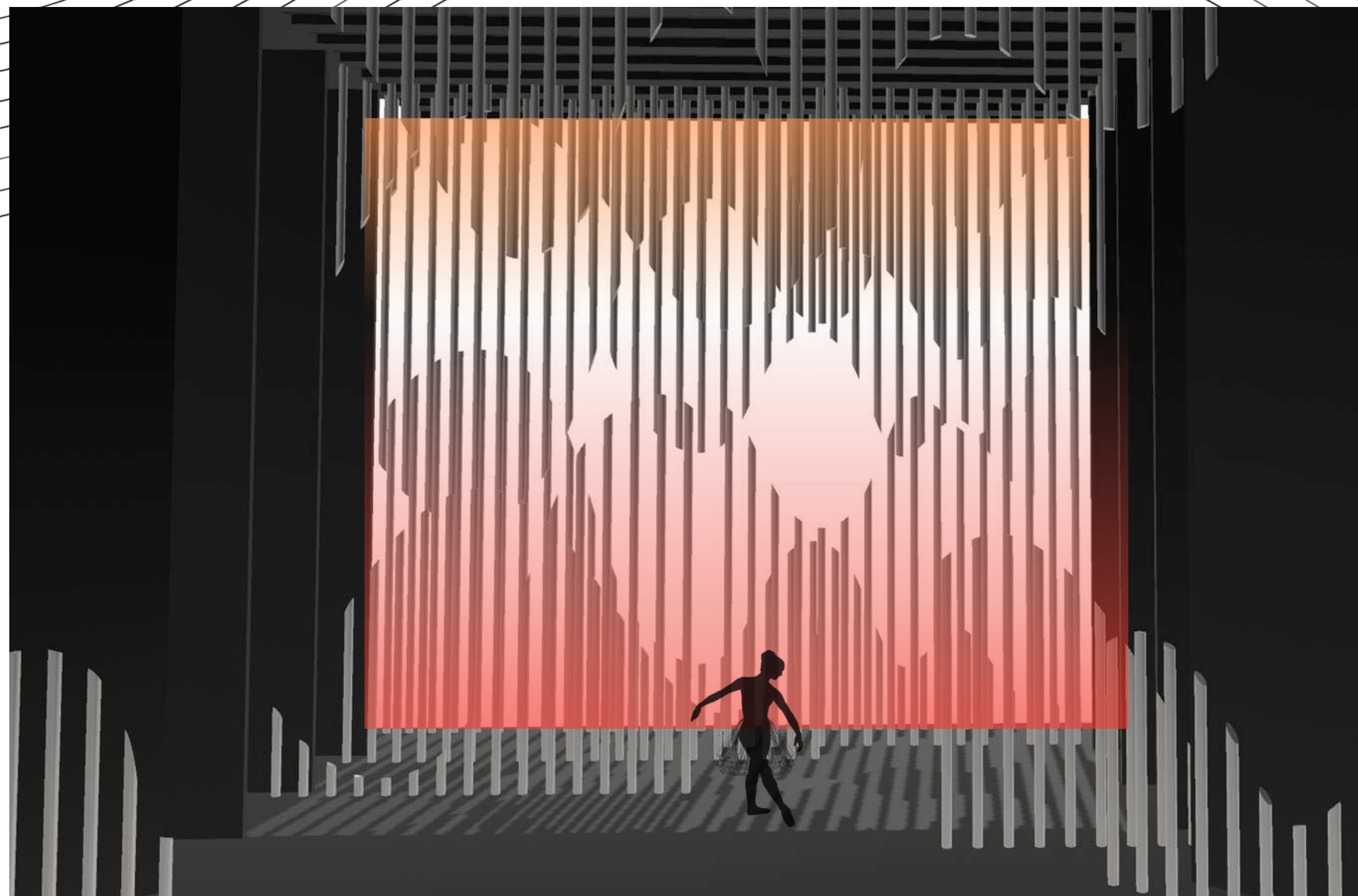


Propuesta Escenográfica Ballet en Familia en el Teatro Metropolitano

Render

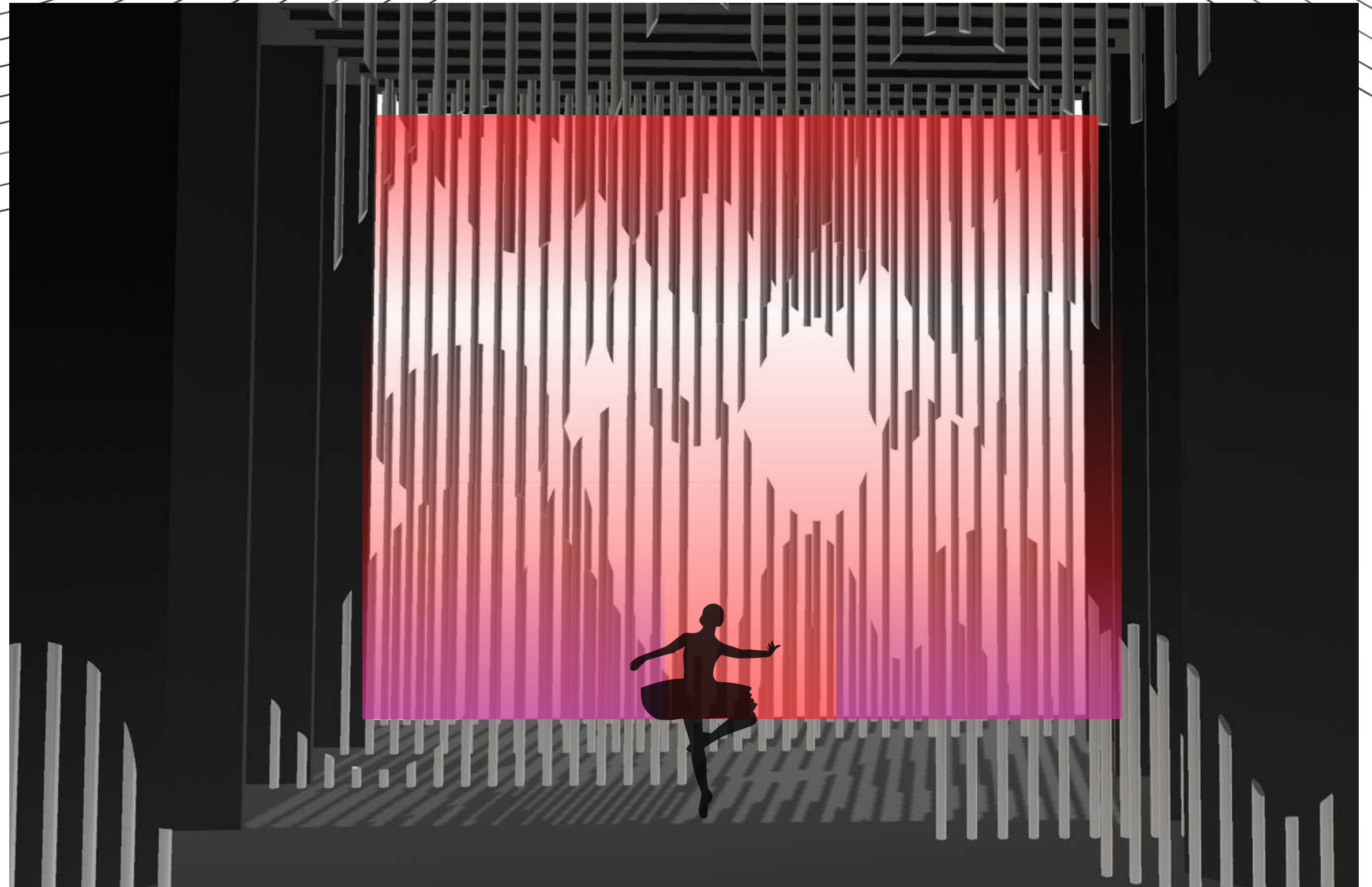


Carmen



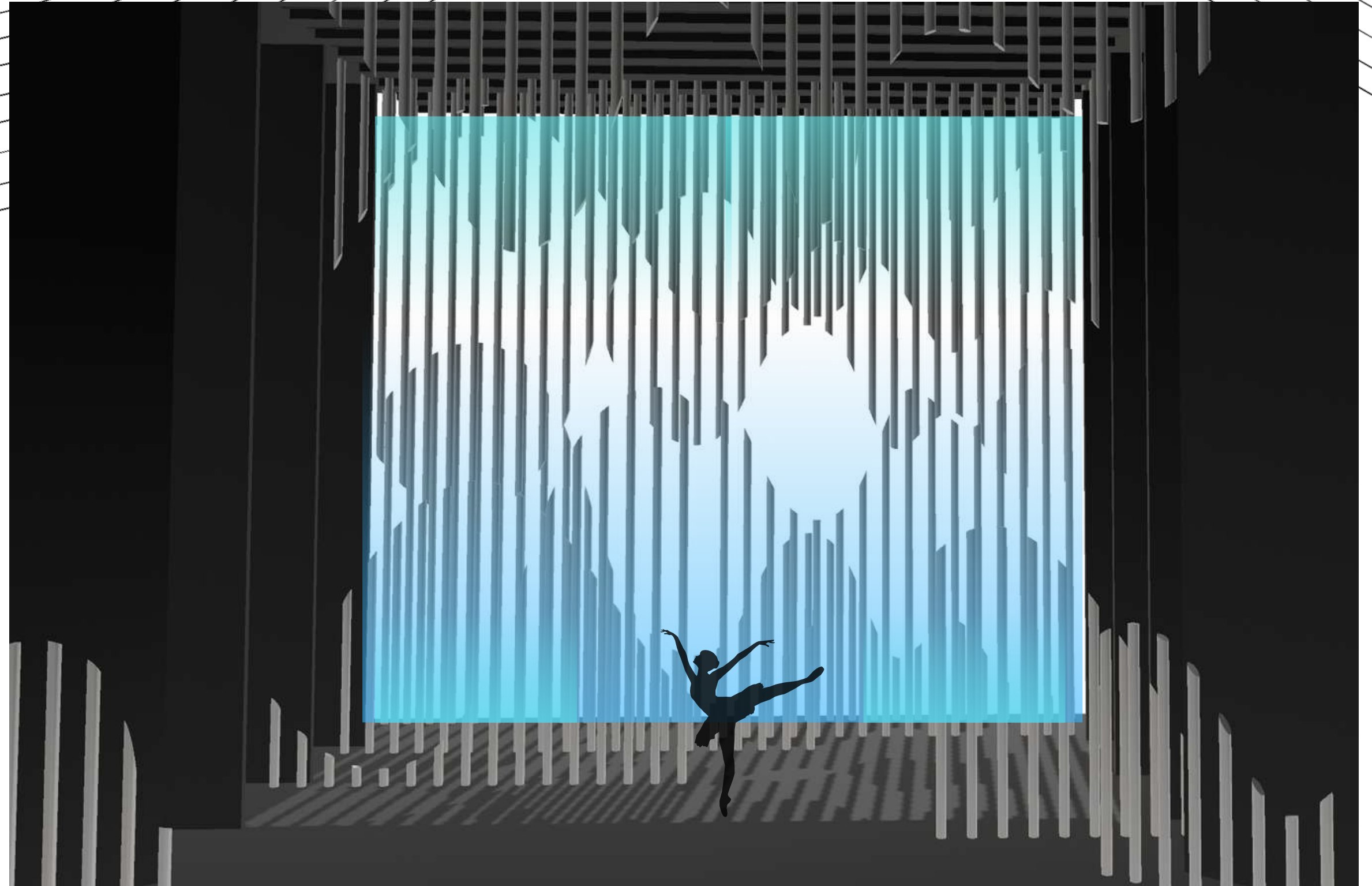
El Lago de Los Cisnes

Odile

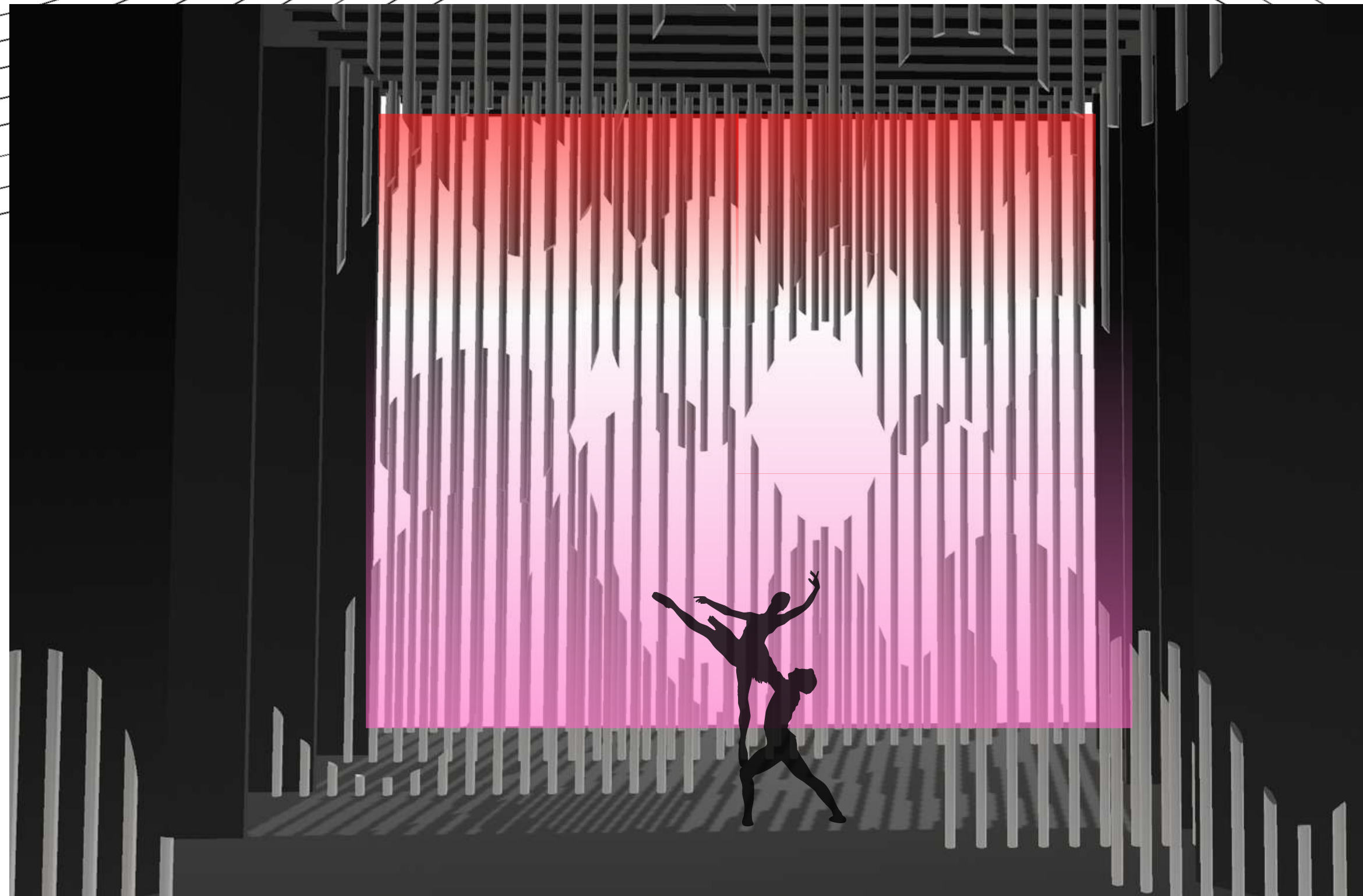


El Lago
de Los
Cisnes

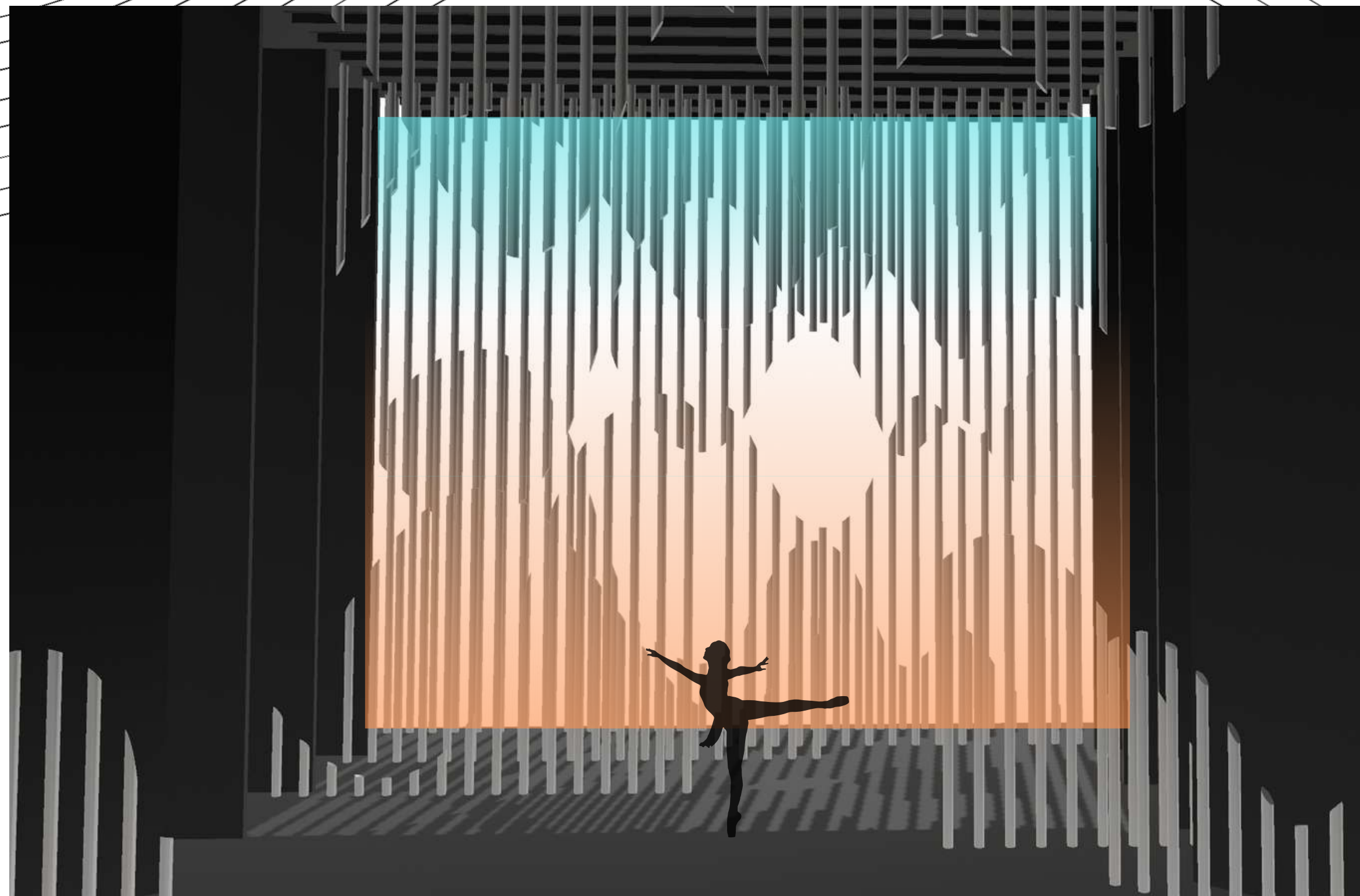
Odette



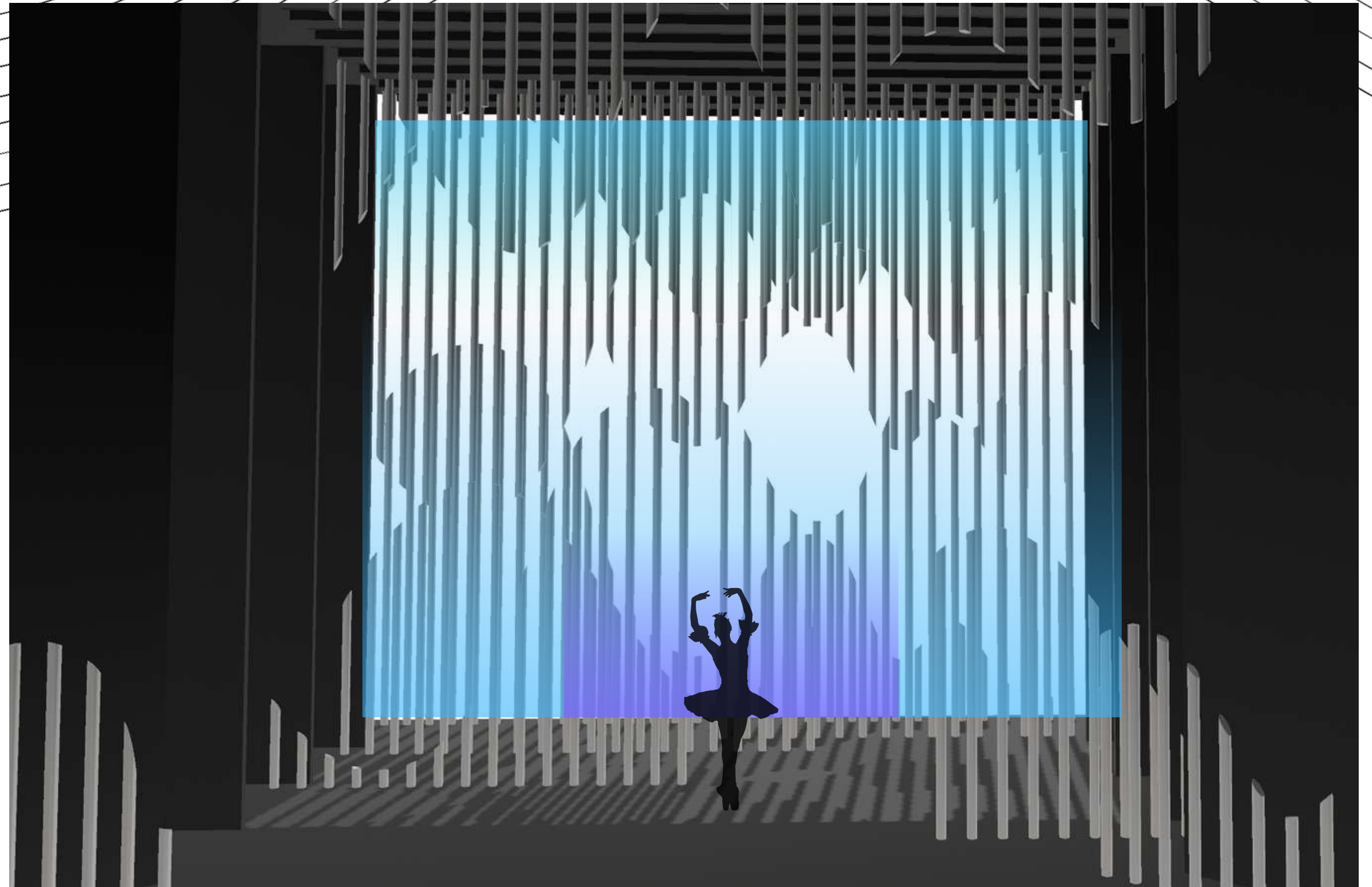
Don Quijote



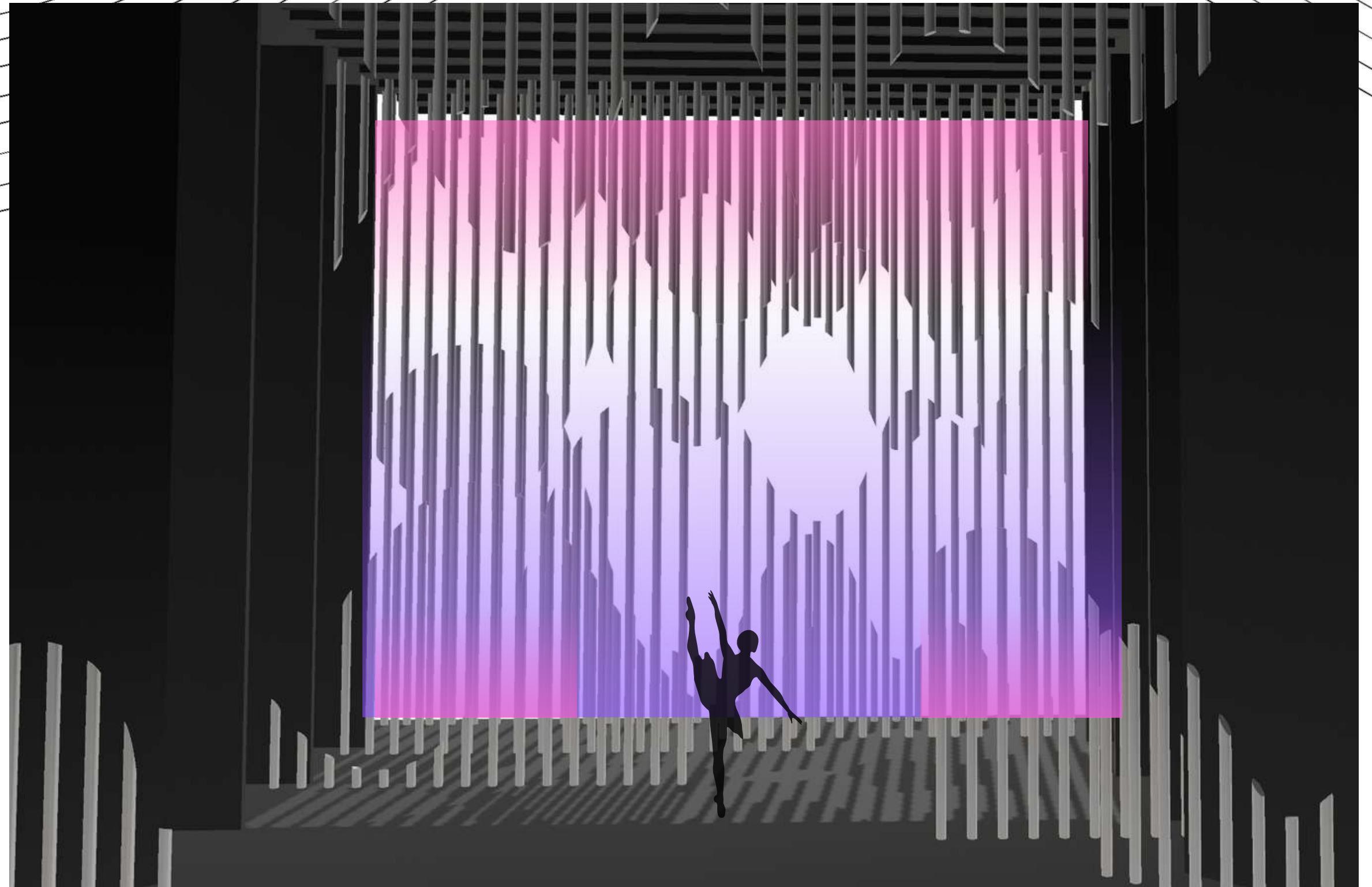
La Bayadera



Corsario

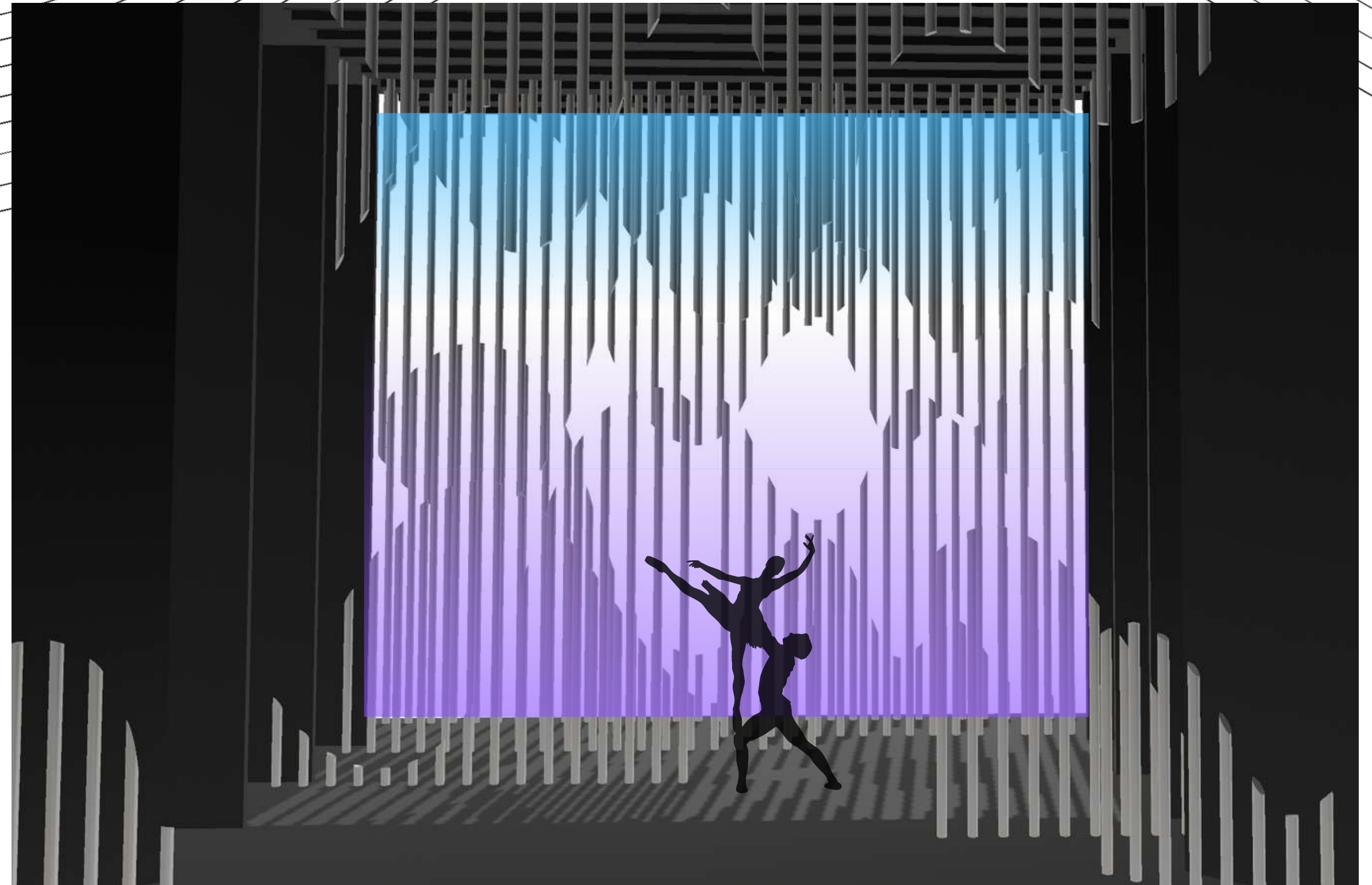


Talismán



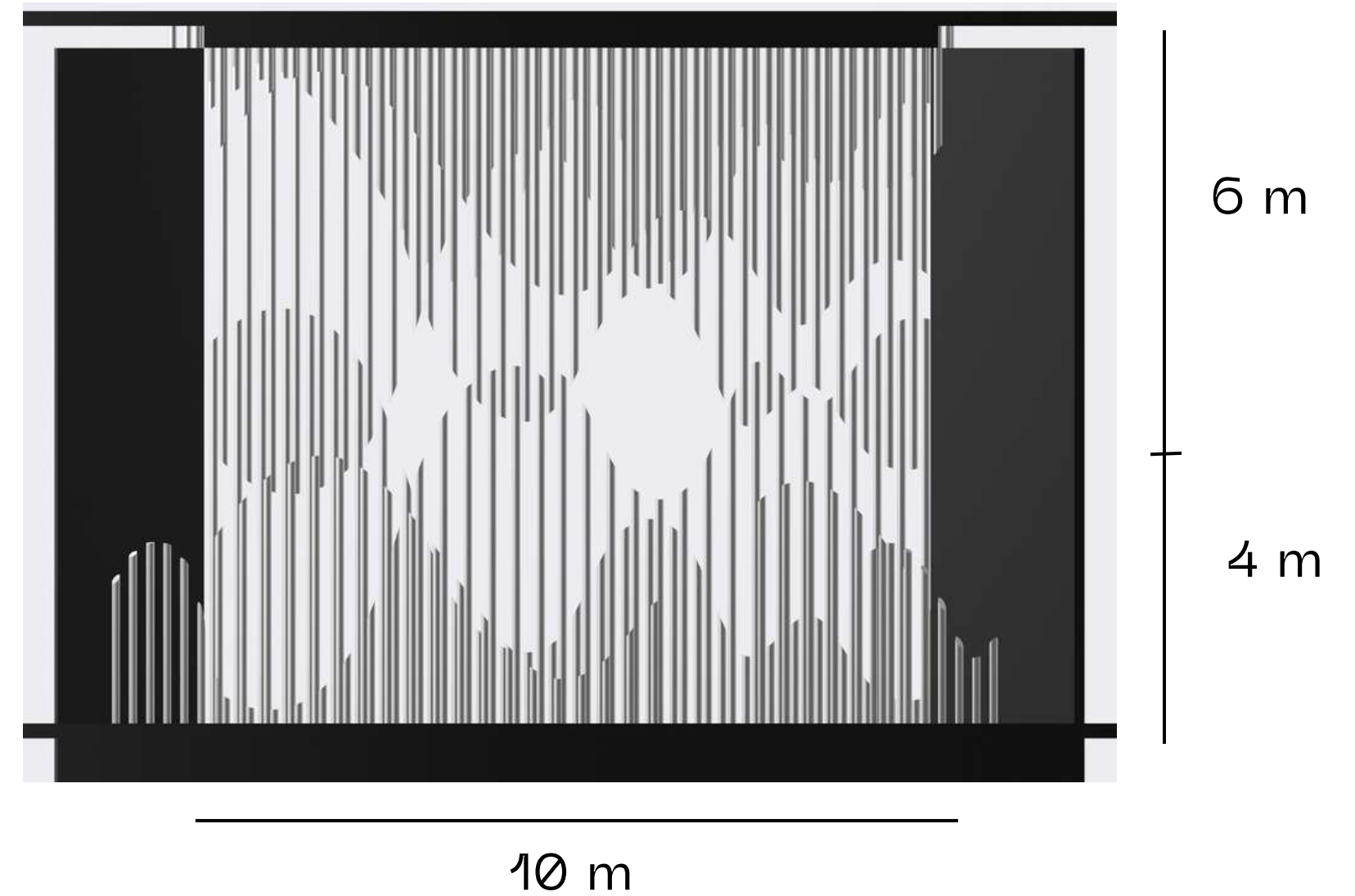
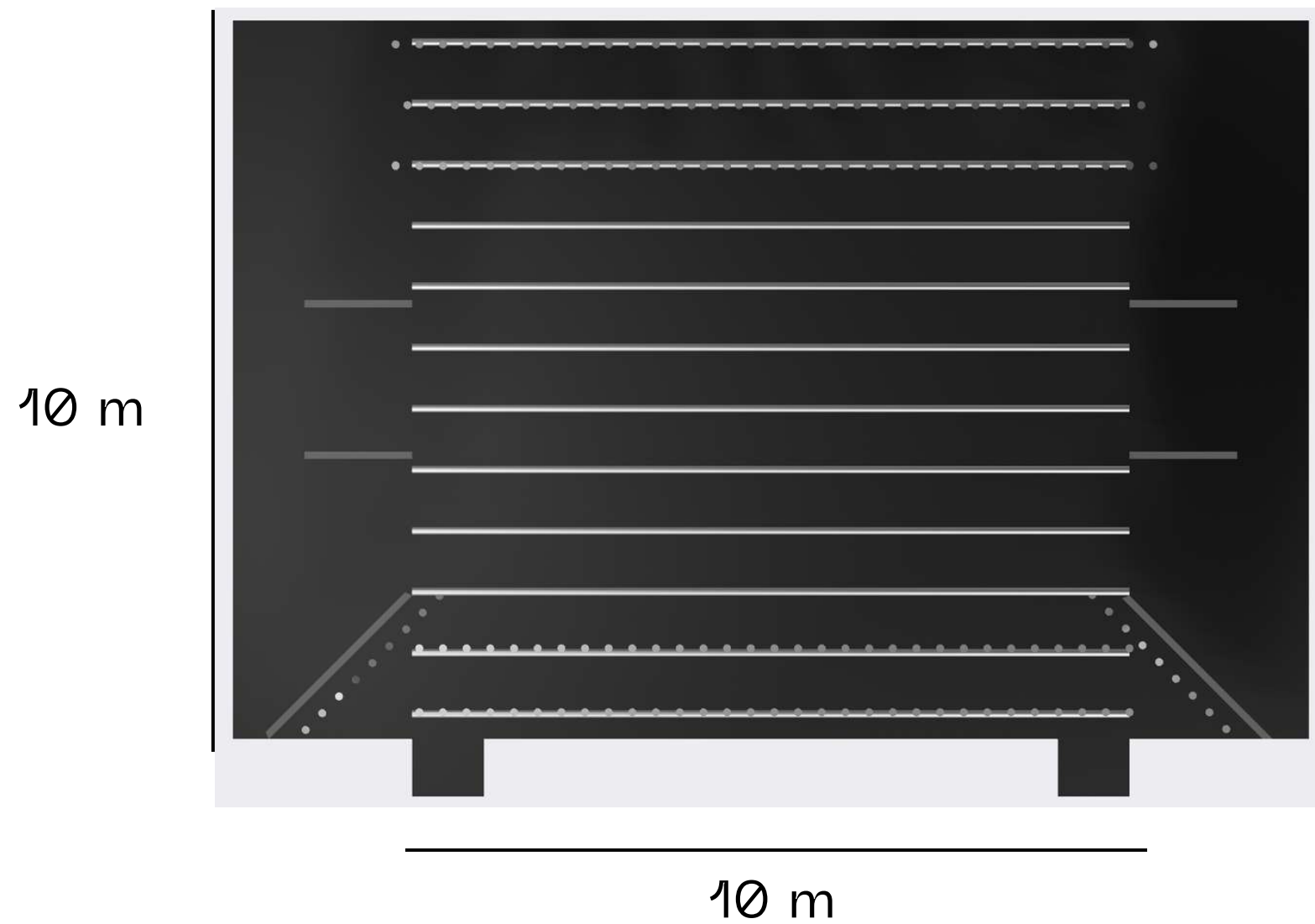
Pas de Deux

Tchaikovsky



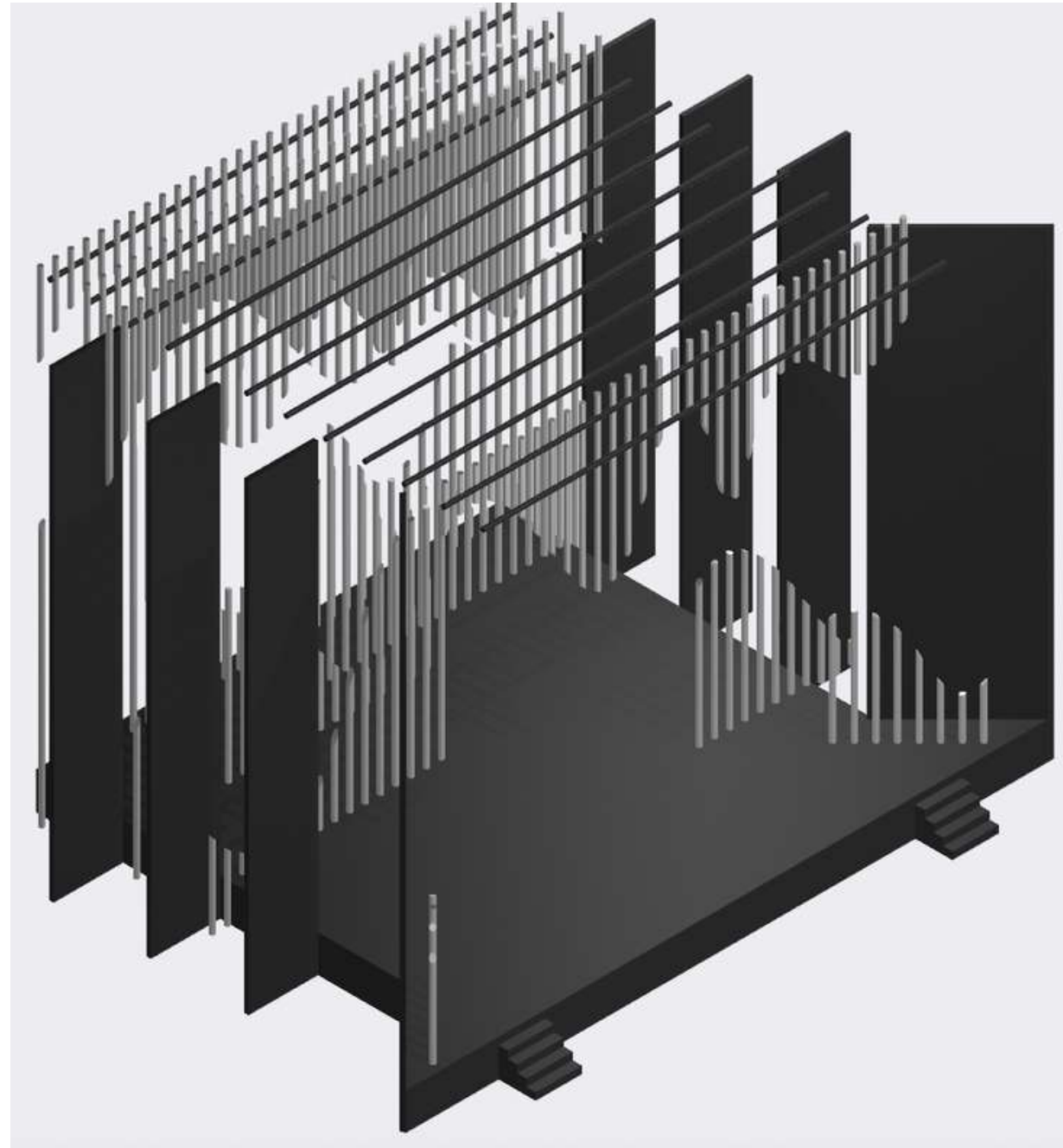
Planos

Planta • frontal

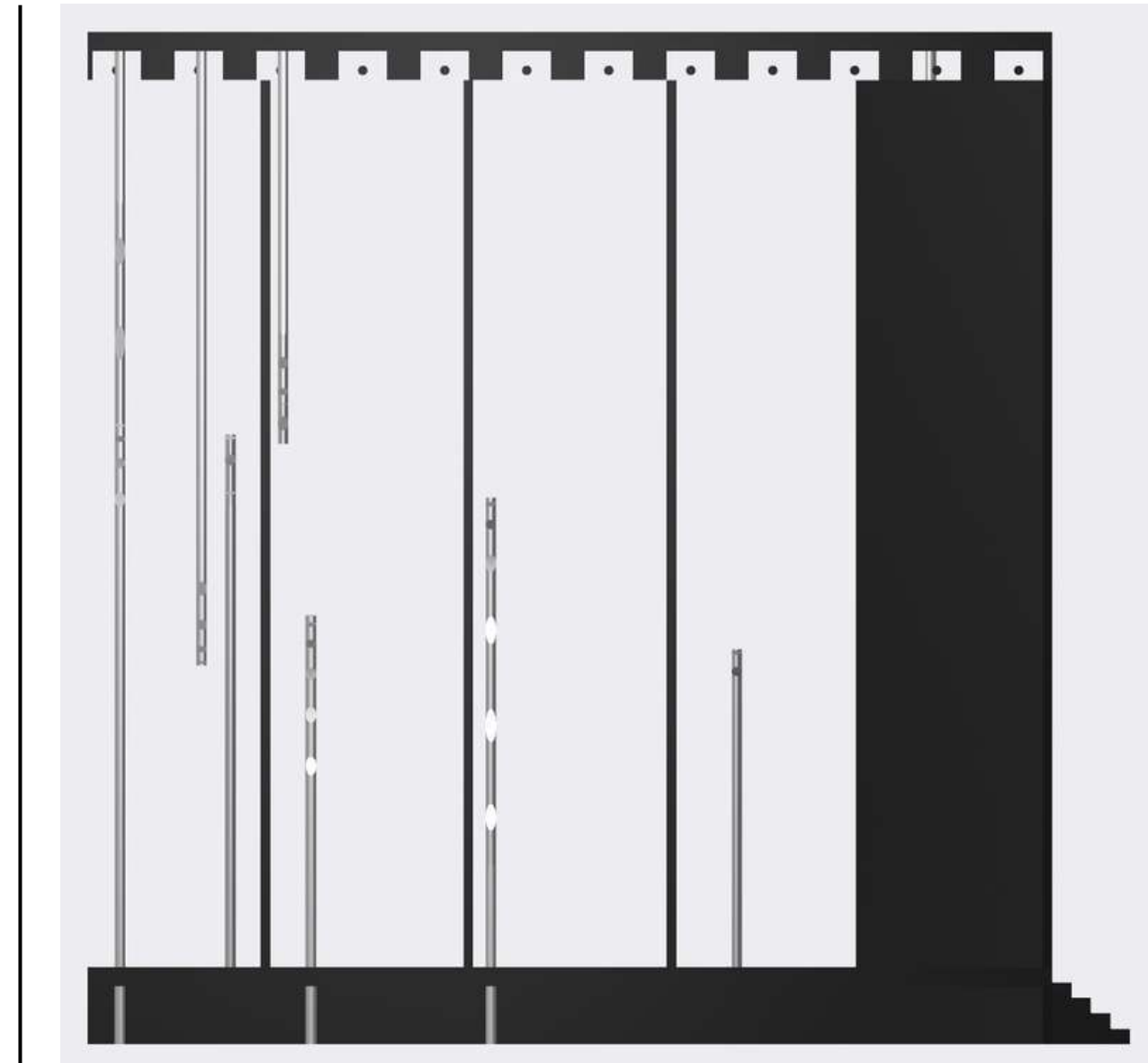


Planos

Isométrico · Lateral



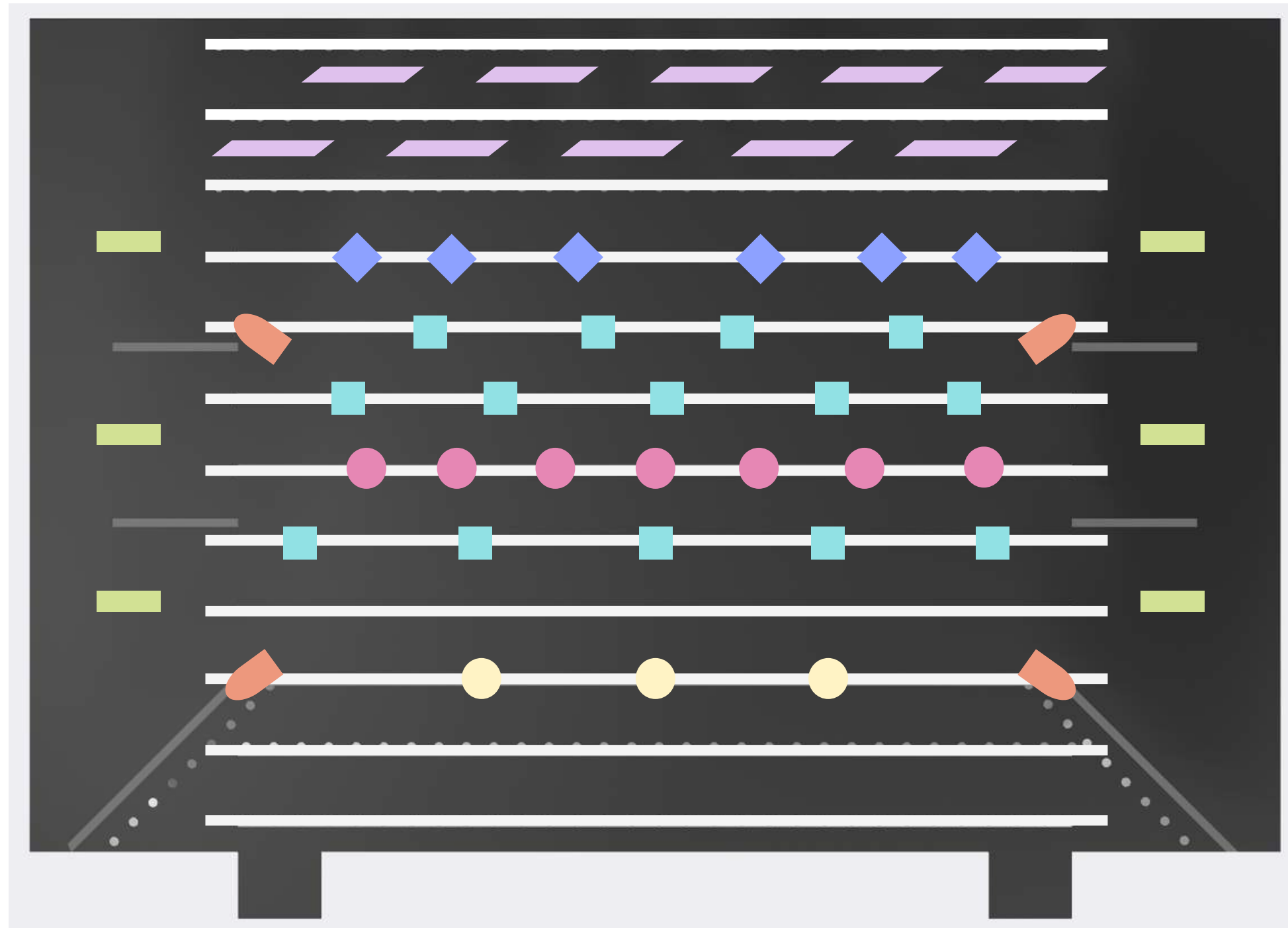
10 m



10 m

Plano de Luces

11 Barras



- Fresnel - Calida
- Par - Neutra
- Par - Neutra
- Cuarzos - Neutra/Fria
- Fresnel - Neutra
- ◆ Cabezas Móviles - Colores
- ▭ Piso - Colores

Maqueta

